

Differential effects of intravenous and subcutaneous insulin sliding scales

Elizabeth Bhupal, Ann Darkins,
Ketan Dhatariya

Article points

1. The use of insulin sliding-scale regimens is common, despite growing evidence suggesting they are often ineffective and may be dangerous.
2. Insulin sliding scales are labour intensive, and regimens are frequently not given as prescribed.
3. Subcutaneous regimens may not result in an improvement in hyperglycaemia, thus delaying discharge from hospital.

Key words

- Sliding scales
- Intravenous
- Subcutaneous

Elizabeth Bhupal is a Medical Student, University of East Anglia, Norwich; Ann Darkins is an Audit Nurse and Ketan Dhatariya is a Consultant in Diabetes and Endocrinology, Elsie Bertram Diabetes Centre, Norfolk and Norwich University Hospital NHS Foundation Trust, Norwich.

The use of insulin sliding scales remains controversial. Their use has been discouraged for several years by standard-setting organisations, yet they continue to be used regularly, and often inappropriately. The authors of this study set out to determine the effectiveness of the insulin sliding-scale regimen in the prevention and treatment of acute hyperglycaemia in hospitalised individuals, with or without a previous diagnosis of diabetes, in their institution. The authors attempted to identify whether change was needed regarding the current method of glycaemic control for inpatients.

Good glycaemic control in the hospital setting has been shown to be associated with improved patient outcomes (Bruno et al, 2008). Despite this, the control of inpatient blood glucose levels often remains a low-priority consideration in individuals in whom diabetes is not the primary cause for admission (Clement et al, 2004).

Inpatient hyperglycaemia has been associated with several detrimental effects, some of which are listed in *Box 1*. As many studies have shown, glycaemic control remains an important factor in determining clinical outcomes in hospitalised individuals (Van den Berghe et al, 2001; Conner et al, 2005; Baker et al, 2006; 2008). While there are no current recommendations for inpatient blood glucose levels in the UK,

recommendations from the US suggest an upper limit of 6.1 mmol/L for people in intensive care, and fasting blood glucose levels between 5.0 and 7.2 mmol/L, with postprandial readings of <10 mmol/L in the non-critical care setting (Clement et al, 2004; American Diabetes Association, 2008).

Aims

To determine the effectiveness of insulin sliding scales in the prevention and treatment of acute hyperglycaemia in hospitalised individuals with or without a previous diagnosis of diabetes.

Patients and methods

Design and subjects

The study used a single-centre retrospective case notes analysis of glycaemic control in

people on medical and surgical wards, and the intensive therapy and coronary care units at the Norfolk and Norwich University Hospital NHS Foundation Trust between September 2007 and February 2008.

All patients were adults, and were receiving intravenous (IV) or subcutaneous (SC) insulin using a sliding scale. Individuals on a sliding scale for less than 24 hours, children, pregnant women with diabetes, and those people who had seen a diabetes inpatient specialist nurse, were excluded from the study (Sampson et al, 2006). The protocol was approved by the University of East Anglia.

Data collection and definitions

On admission, each individual had their bedside finger-prick blood glucose concentrations measured at 1- or 2-hourly intervals for IV sliding-scale regimens, and 4- or 6-hourly intervals for SC insulin regimens, using a hand-held glucose meter. The meter was Trust approved, and internally and externally quality assessed at weekly and 2-monthly intervals, respectively. Insulin doses were adjusted according to finger-prick blood glucose concentrations using Trust guidelines documented on the insulin sliding scale prescription charts.

Data were extracted from medical and nursing notes, and the insulin sliding-scale prescription charts. Baseline data were obtained, including age, gender, hospital ward, diagnosis of diabetes, reason for admission, and type and duration of insulin sliding scale. In addition, the total number of episodes of hypoglycaemia and hyperglycaemia were recorded, as well as including the documented blood glucose measurements. One of the authors contacted the wards daily, and prospectively collected the unique hospital number of any individuals who had been placed on an IV or SC sliding-scale regimen for 24 hours or more. These data were collected after the person had been discharged.

Hypoglycaemia was defined as a blood glucose level <4.0 mmol/L, normoglycaemia between

4.0 and 10.0 mmol/L, and hyperglycaemia as a blood glucose level >10 mmol/L.

Data analysis

Data were analysed through means and percentages, with statistical analyses performed using an unpaired student *t*-test and a Mann-Whitney *U*-test wherever appropriate. The selected statistical test was performed using Microsoft Office Excel 2003 or Statistical Package for the Social Sciences (SPSS) version 14.0. *P*-values <0.05 were considered statistically significant.

Results

A total of 64 inpatients who met the inclusion criteria were identified. Their demographic data are shown in *Table 1*. The top five causes of admission were:

- Cardiac chest pain (*n*=10).
- Pneumonia (*n*=10).
- Diabetic ketoacidosis (*n*=8).
- Vascular (*n*=8).
- Collapse (*n*=6).

Eighty-eight per cent of those without a previous diagnosis of diabetes were receiving IV insulin (*n*=15) compared with 100% of those with type 1 diabetes (*n*=9) and 66% of those with type 2 diabetes (*n*=25). The duration of sliding scale use is shown in *Table 2*.

Glycaemic control is outlined in *Table 3*. *Figures 1* and *2* show the effects of each sliding scale on glycaemic control.

Page points

1. On admission, each individual had their bedside finger-prick blood glucose concentrations measured at 1- or 2-hourly intervals for intravenous sliding-scale regimens, and 4- or 6-hourly intervals for subcutaneous insulin regimens.
2. Hypoglycaemia was defined as a blood glucose level <4.0 mmol/L, normoglycaemia between 4.0 and 10.0 mmol/L, and hyperglycaemia as a blood glucose level >10 mmol/L.

Box 1. Some of the detrimental effects of inpatient hyperglycaemia.

- Increased cardiac mortality after an acute myocardial infarction (Capes et al, 2000).
- Increased mortality after cerebrovascular event (Kannel and McGee, 1979).
- Increased mortality after cardiac surgery (Furnary et al, 2004).
- Increased infarct size post-cerebral vascular accident (Scott et al, 1999).
- Increased rates in nosocomial infection and sepsis (Pomposelli et al, 1998).
- Increased mortality among critically ill patients (Van den Berghe et al, 2001).
- Prolonged length of stay (Sampson et al, 2007b).

Table 1. Demographic results of participants (n=64).

Category	Percentage (n)
Male	58 (37)
Mean age	62.6 years
Previously undiagnosed diabetes	27 (17)
Type 1 diabetes	14 (9)
Type 2 diabetes	59 (38)
On IV or SC regimens	77 (49) / 23 (15)
Males receiving IV sliding scale	81 (30)
Females receiving IV sliding scale	70 (19)
Mean age of those on IV or SC regimens	58.8 / 74.9 years (<i>P</i> =0.0016)
Place of care:	
General medical wards	8%
Specialty metabolic ward	28%
General surgical wards	16%
Intensive therapy or coronary care	48%

IV=intravenous; SC=subcutaneous

Table 2. Mean duration of sliding scale use (days).

Overall	3.2
Male or female	3.1 vs. 3.25 (<i>P</i> =0.85)
Intravenous versus subcutaneous	2.69 vs. 4.8 (<i>P</i> =0.004)

Table 3. Glycaemic control.

Overall percentage of hypoglycaemia (%)	2
Hypoglycaemic episodes: IV versus SC (%)	2 vs. 1 (<i>P</i> =0.09)
Hyperglycaemic episodes: IV versus SC (%)	38 vs. 30 (<i>P</i> =0.23)

IV=intravenous; SC=subcutaneous

Discussion

The insulin sliding scale, either IV or SC, has been heavily criticised, with mounting evidence against its use as it has been shown to be ineffective, or even dangerous (Queale et al, 1997; Hirsch, 2009). The IV sliding scale may be useful in individuals who are unable to eat or drink, but the SC sliding scale has no evidence base. Despite this, over half of all hospitals in the UK still recommend its use (Sampson et al, 2007a).

The results of the present study show that while glycaemic control does not deteriorate on SC sliding scales, it also does not improve. This is in contrast to the improvement seen using an IV regimen.

These data support previous work by Queale et al (1997), demonstrating that the use of a sliding scale leads to erratic glycaemic control while in hospital. The results also indicate that sliding scales appear unable to maintain appropriate blood glucose concentrations, with high glycaemic variability using either regimen; although this significantly improved towards the last 36 hours on the IV sliding scale.

The SC insulin sliding-scale regimen yielded no significant improvements in mean blood glucose concentrations during any time, comparing the mean of the first 12 hours with the last 12 hours (8.8 vs 7.7 mmol/L; *P*=0.31); this was regardless of gender. Potential causes may be due to the older patient population in the SC group, and the difference of route administration – which is technique dependent – and the small sample size. The latter issue is an important limitation in this study.

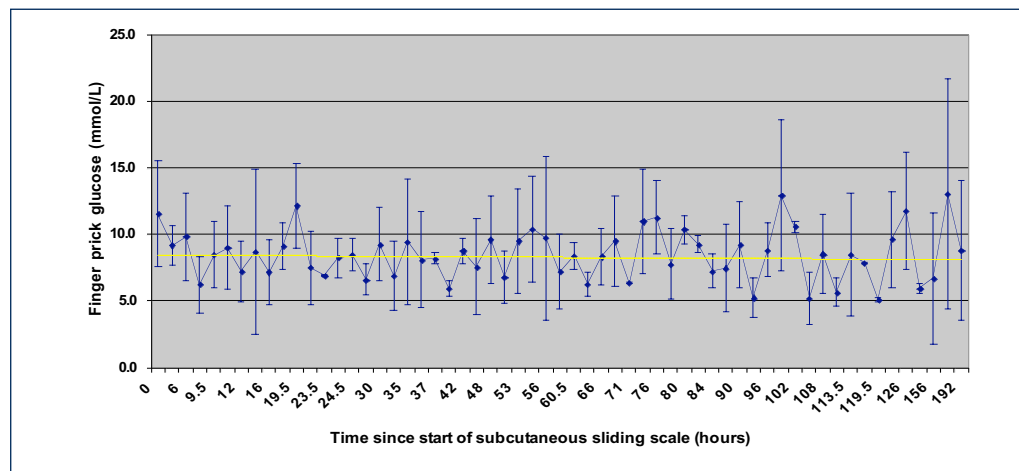
Mean glucose levels in the IV group improved over the study duration. This may be as a result of the younger patient population, the route of administration being more effective at reducing technique problems, and possibly more frequent blood glucose monitoring.

The data presented reflect a failure to achieve recommended blood glucose control. The authors acknowledge that this may be due to a number of factors, including poor implementation of the sliding scale, or because it is ineffective, owing to its retrospective approach, rather than a preventative approach, to the treatment and management of hyperglycaemia. The prospective use of a basal-bolus regimen has been shown to be significantly better in controlling blood glucose levels in non-critically ill, hospitalised individuals (Umpierrez et al, 2007).

Limitations

Data in the study were collected retrospectively after patients had been discharged.

Figure 1. Mean plasma glucose over time using a subcutaneous insulin sliding scale (n=15). No overall improvement in glycaemic control was observed from the first 12 hours of the start of the sliding scale through to the last 12 hours before being taken off the regimen (mean blood glucose levels 8.8 vs 7.7 mmol/L; P=0.31). This was the same across all wards (data not shown).



This meant that some of the data were missing or incomplete. Furthermore, the sample size was relatively small and from a single institution, with unequal proportions between the IV and SC regimens.

Recommendations

As a result of this study, the authors have successfully convinced their Trust that the use of SC sliding scales needs to be reassessed. The use of the basal-bolus regimen is due to be trialled on wards that currently use the SC regimen to assess the impact on glycaemic control, nursing staff time and length of stay.

In addition, the results of this work have been disseminated widely in the Trust, making healthcare professionals reconsider whether the use of a sliding scale is the

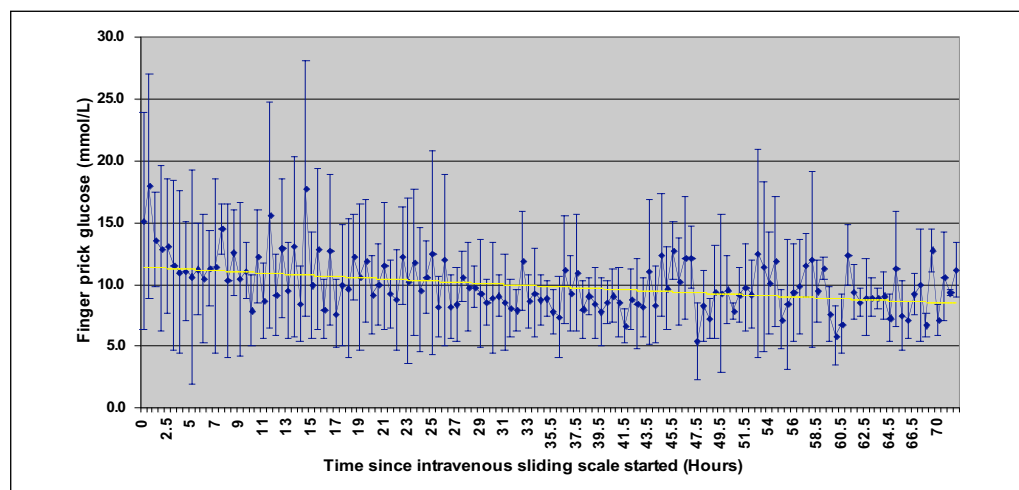
most appropriate regimen for the patient, or whether it is being instituted for the perceived ease of use for the staff.

Finally, the results have been highlighted to those involved in the care of people with diabetes, so that when optimal glycaemic control is not being achieved, they call in the inpatient diabetes specialist nurses sooner than was being done previously.

Conclusion

The use of SC sliding scale insulin in this study did not improve glycaemic control on a variety of wards, or between men and women; however, IV insulin led to better glycaemic control. This aspect of inpatient management needs more attention, and further standards of care need to be implemented. ■

Figure 2. Mean plasma glucose over time using an intravenous insulin sliding scale (n=49). There was a significant improvement in mean blood glucose concentration from the first 12 hours to the last 12 hours (11.8 vs 7.6 mmol/L; P=0.0005).



- American Diabetes Association (2008) Executive Summary: Standards of medical care in diabetes 2009. *Diabetes Care* **32**(Supplement 1): S6–12
- Baker EH, Janaway CH, Philips BJ et al (2006) Hyperglycaemia is associated with poor outcomes in patients admitted to hospital with acute exacerbations of chronic obstructive pulmonary disease. *Thorax* **61**: 284–89
- Baker ST, Chiang CY, Zajac JD et al (2008) Outcomes for general medical inpatients with diabetes mellitus and new hyperglycaemia. *Med J Aust* **188**: 340–3
- Bruno A, Gregori D, Caropreso A et al (2008) Normal glucose values are associated with a lower risk of mortality in hospitalized patients. *Diabetes Care* **31**: 2209–10
- Capes SE, Hunt D, Malmberg K, Gerstein HC (2000) Stress hyperglycaemia and increased risk of death after myocardial infarction in patients with and without diabetes: a systematic overview. *Lancet* **355**: 773–8
- Clement S, Braithwaite SS, Magee MF et al (2004) Management of diabetes and hyperglycemia in hospitals. *Diabetes Care* **27**: 553–97
- Conner TM, Flesner-Gurley KR, Barner JC (2005) Hyperglycemia in the hospital setting: The case for improved control among non-diabetics. *Ann Pharmacother* **39**: 492–501
- Furnary AP, Wu Y, Bookin SO (2004) Effect of hyperglycemia and continuous intravenous insulin infusions on outcomes of cardiac surgical procedures: the Portland Diabetic Project. *Endocr Pract* **10**(Suppl 2): 21–33
- Hirsch IB (2009) Sliding scale insulin – time to stop sliding. *JAMA* **301**: 213–14
- Kannel WB, McGee DL (1979) Diabetes and cardiovascular disease. The Framingham study. *JAMA* **241**: 2035–8
- Pomposelli JJ, Baxter JK, Babineau TJ et al (1998) Early postoperative glucose control predicts nosocomial infection rate in diabetic patients. *JPEN J Parenter Enteral Nutr* **22**: 77–81
- Queale WS, Seidler AJ, Brancati FL (1997) Glycemic control and sliding scale insulin use in medical inpatients with diabetes mellitus. *Arch Intern Med* **157**: 545–52
- Sampson MJ, Crowle T, Dhatariya K et al (2006) Trends in bed occupancy for inpatients with diabetes before and after the introduction of a diabetes inpatient specialist nurse service. *Diabet Med* **23**: 1008–15
- Sampson MJ, Brennan C, Dhatariya K et al (2007a) A national survey of in-patient diabetes services in the United Kingdom. *Diabet Med* **24**: 643–9
- Sampson MJ, Dozio N, Ferguson B, Dhatariya K (2007b) Total and excess bed occupancy by age, speciality and insulin use for nearly one million diabetes patients discharged from all English Acute Hospitals. *Diabetes Res Clin Pract* **77**: 92–8
- Scott JF, Robinson GM, French JM et al (1999) Glucose potassium insulin infusions in the treatment of acute stroke patients with mild to moderate hyperglycemia : The glucose insulin in stroke trial (GIST). *Stroke* **30**: 793–9
- Umpierrez GE, Smiley D, Zisman A et al (2007) Randomized study of basal-bolus insulin therapy in the inpatient management of patients with type 2 diabetes (RABBIT 2 trial). *Diabetes Care* **30**: 2181–6
- Van den Berghe G, Wouters P, Weekers F et al (2001) Intensive insulin therapy in the surgical intensive care unit. *N Engl J Med* **345**: 1359–67

“IV insulin led to better glycaemic control, most notably in the intensive care and specialist metabolic wards.”

Writing for publication

The *Journal of Diabetes Nursing* welcomes a range of articles relating to the clinical, professional and educational aspects of diabetes nursing.

If you have written an article you wish to submit for publication, or are interested in writing for us and would like to discuss it further, please contact James Heywood (0207 627 6658), or email james@sbcommunicationsgroup.com.

